

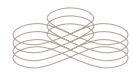


THE FONTENAY

HAMBURG



OUR SUITES



WELCOME TO LAKESIDE LUXURY

Located on the tranquil banks of Alster Lake in the heart of the city, the fascinating, sculpture-like architecture seamlessly integrates the lake's waterline with the surrounding parkland, creating the perfect balance between nature and urbanity. Designed as an ultimate urban escape, The Fontenay epitomizes pure lakeside luxury.





OUR SUITES

Generously appointed, all our 17 suites have a separate bed and living room as well as balcony or terrace with unforgettable park or lake view.

With its curved walls, 2,85m/9,4ft high ceilings and large panoramic floor-to-ceiling windows, nature becomes part of the experience - inviting the guest to savour the enchanting view. Warm, bright hues of soft turquoise blend with beautiful materials and designer features. They reflect the unique lakeside location in the middle of the park. All our suites are featured with parquet flooring, walk-in wardrobes and guest wc.

With our 8 different suite categories from 65 to 200m² there is the perfect suite for every guest.



FONTENAY SUITE

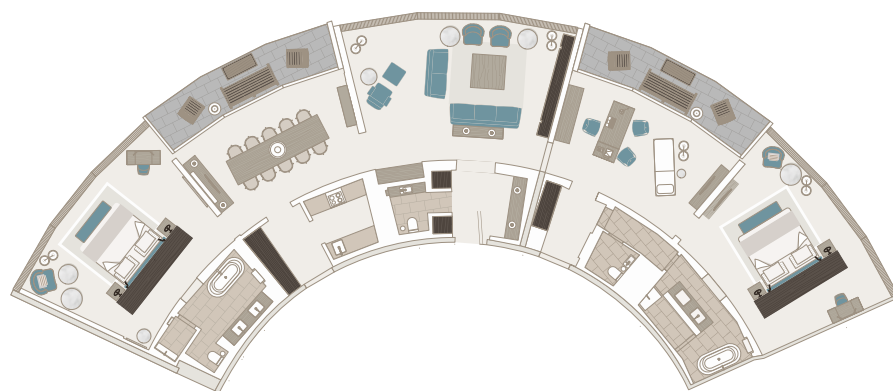
At 200m², the Fontenay Suite, situated on the 5th floor, is the largest suite in the hotel. It offers spectacular and unforgettable panoramic views across the lake and the city. It comprises of two separate bedrooms with extra- long beds, a spacious dressing room, an office/studio, a dining room with a dining table for 10 guests, as well as a fully equipped kitchen and a guest WC. Both natural stone bathrooms - including the 12m² master bathroom - are fitted with a bathtub and a rain shower, two washbasins and a separate WC. Two private balconies, each measuring 20m², increase this sense of freedom. Warm, bright colors mixed with light blue, combined with beautiful materials and designer furniture reflect the unique lake position in the middle of the park.

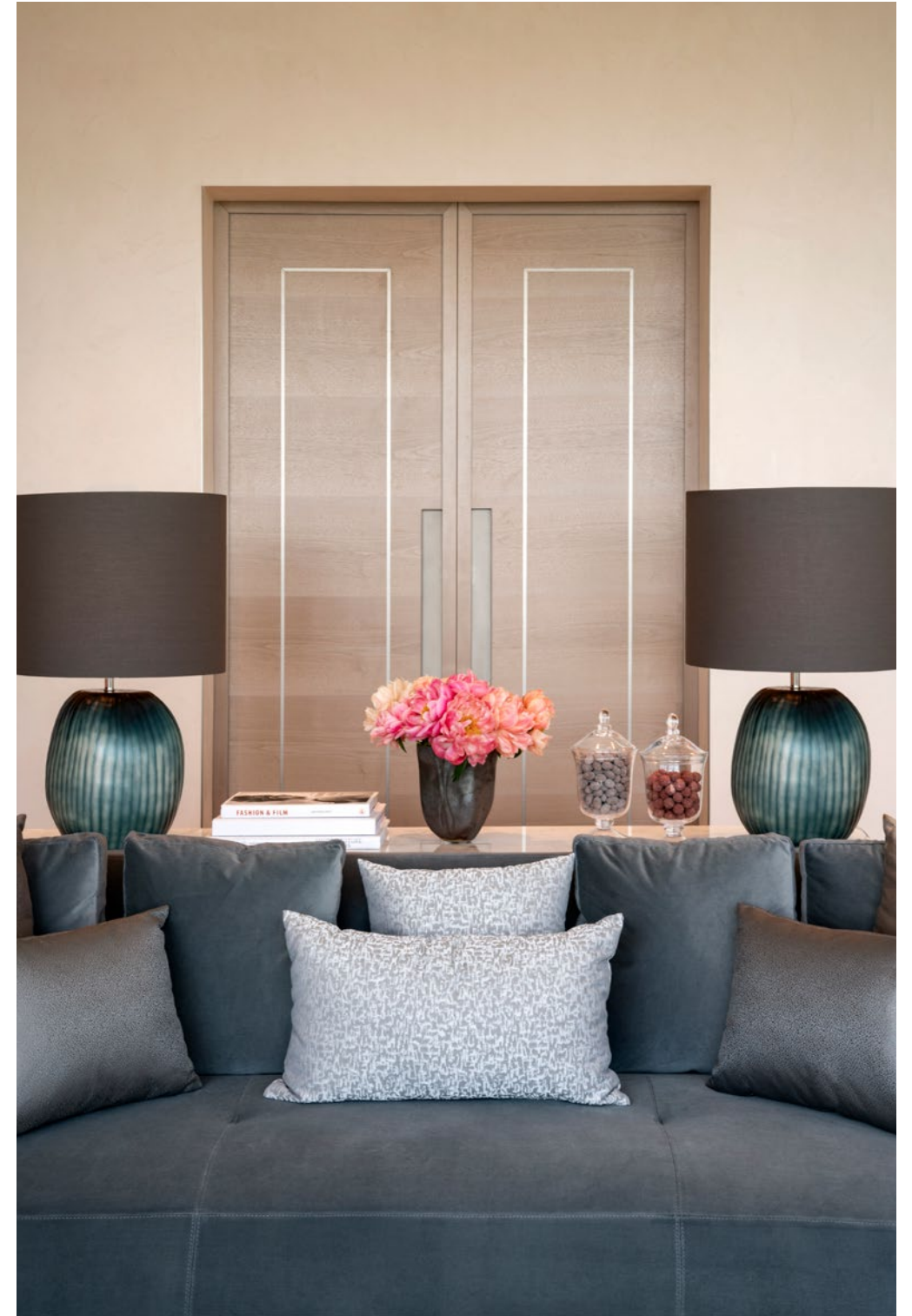
SIZE: 200M² / 2153 FT²

LOCATION: SPECTACULAR LAKE VIEWS - 5TH FLOOR

FEATURES: TWO 20M² FURNISHED PRIVATE BALCONIES

FLOOR PLAN:







ALSTER SUITE

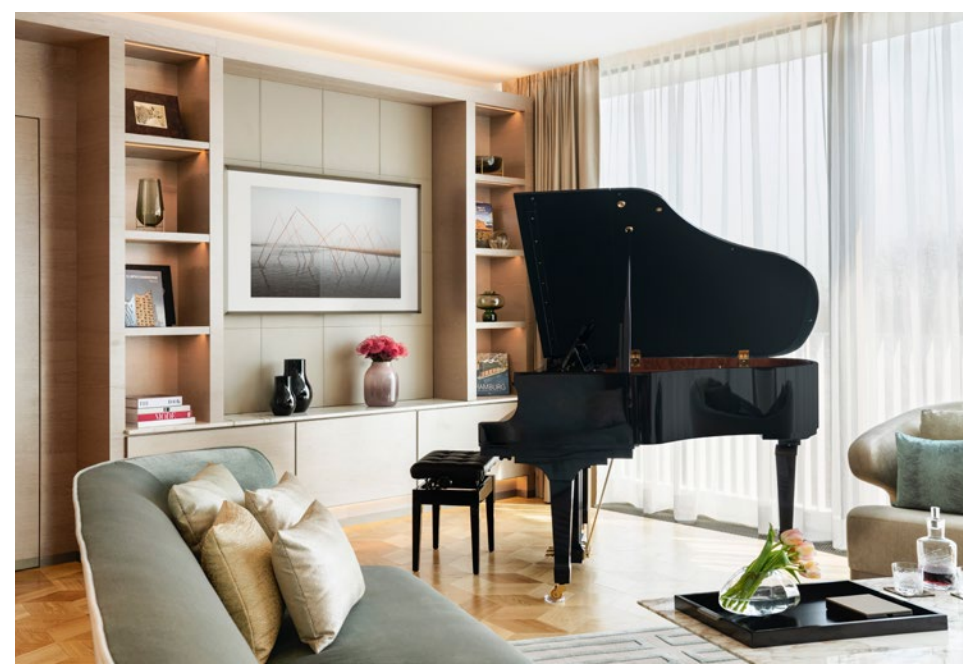
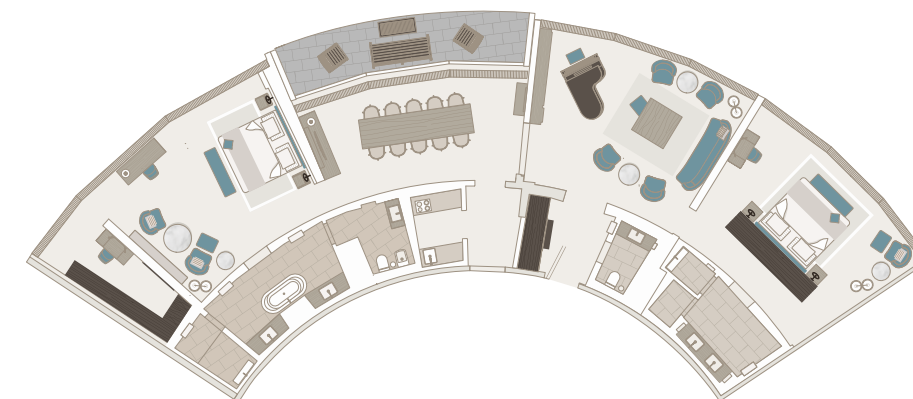
Situated on the 4th floor, the 180m² Alster Suite offers magnificent views across the lake. It comprises of a large living room with a concert piano, two bedrooms with extra-long beds, a separate dining room with a dining table for 10 guests, as well as a fully equipped kitchen. Spacious walk-in wardrobes, a desk and a guest WC are also featured. Both natural stone bathrooms - including the 15m² master bathroom - are fitted with a bathtub and rain shower, two washbasins and a separate WC. Warm, bright hues of soft turquoise blend with beautiful materials and designer furniture. Our 28m²² connecting Fontenay Classic can be added on request.

SIZE: 180M² / 1938 FT²

LOCATION: LAKE VIEWS - 4TH FLOOR

FEATURES: 20M² FURNISHED PRIVATE BALCONY

FLOOR PLAN:

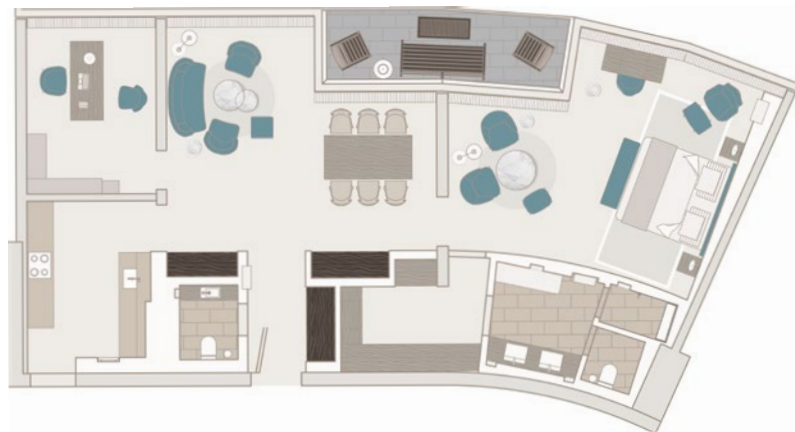


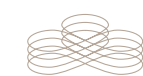
SENATOR SUITE

Situated on the 5th floor, the Senator Suite provides fantastic views across the lake. It features a generous living room and separate bedroom decorated in shades of light blue. The suite presents fine parquet flooring, a dining table for four, dressing room, a desk, an extra-long bed and a guest WC. A fully equipped kitchen and a separate office complete this suite. The 10m² private balcony increases the sense of space, particularly in the summer. The natural stone bathroom is fitted with a rain shower, two washbasins and a separate WC.

- SIZE: 105M² / 1130 FT²
- LOCATION: LAKE VIEW – 5TH FLOOR
- FEATURES: 10M² FURNISHED PRIVATE BALCONY

FLOOR PLAN:





PANORAMA SUITE

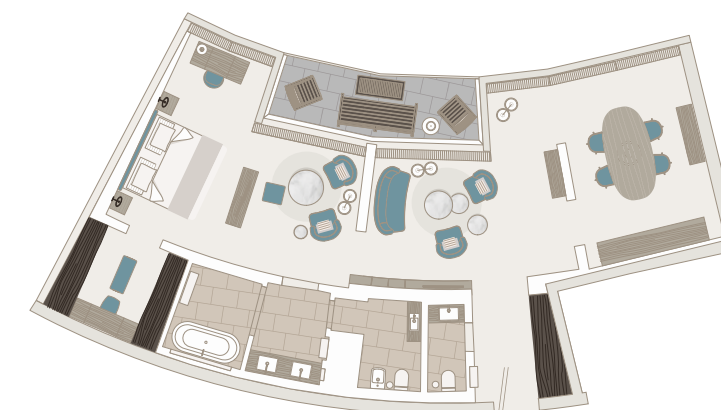
Situated on the 4th and 5th floor, all Panorama Suites offer spectacular views across the lake. The 85-95m² suites feature a separate living room and bedroom with fine parquet flooring, a dining table for four, a walk-in wardrobe with full-length mirror, a desk, an extra-long bed and a guest WC. The 10m² private balcony increases the sense of space. The natural stone bathrooms are fitted with a bathtub and a rain shower, two washbasins and a separate WC.

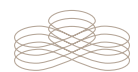
SIZE: 85-95M² / 915-1023 FT²

LOCATION: LAKE VIEW - 4TH OR 5TH FLOOR

FEATURES: 10M² FURNISHED PRIVATE BALCONY

FLOOR PLAN:





PARK SUITE

Each measuring 120m², both Park Suites offer generous space, comprising of a living room, two bedrooms and a fully equipped kitchen. Situated on the 2nd and 3rd floor, they feature magnificent views of the surrounding park; in winter, the bare trees reveal the beautiful lake beyond. The suites are appointed with fine parquet flooring, a dining table for six, two bathrooms, a dressing room, a desk, an extra-long bed in both bedrooms and a guest WC.

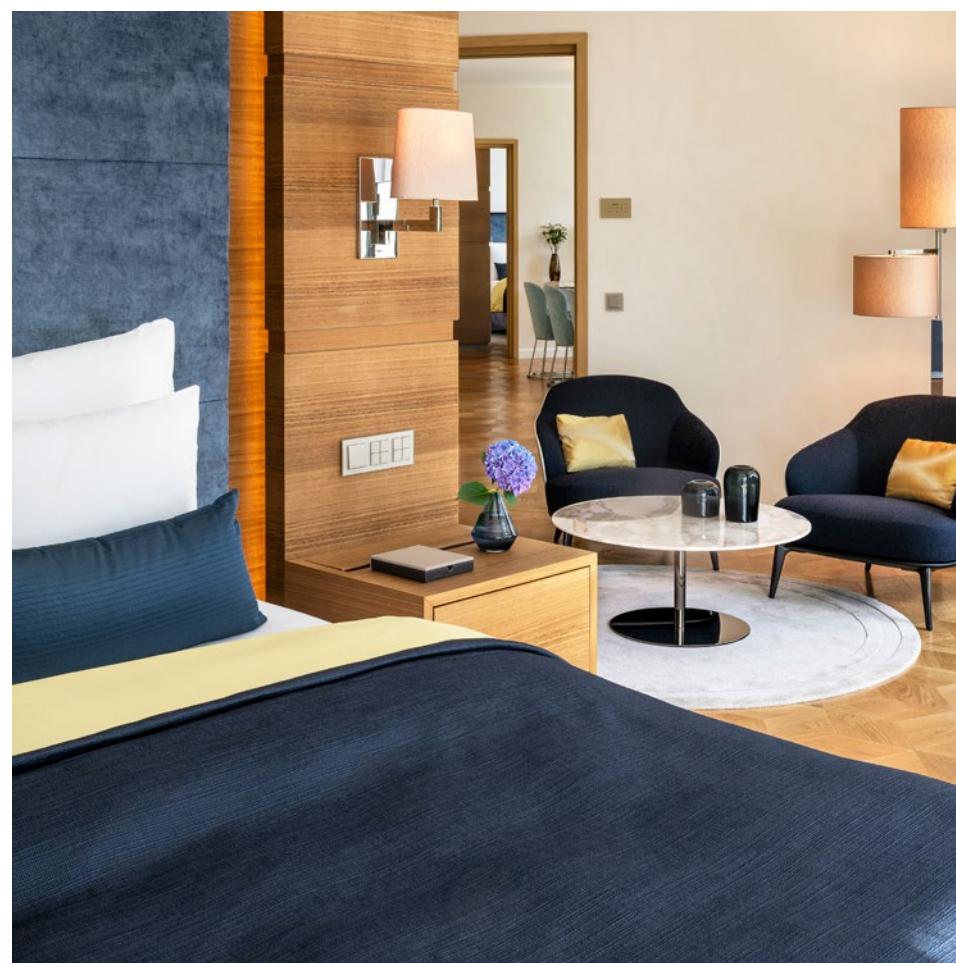
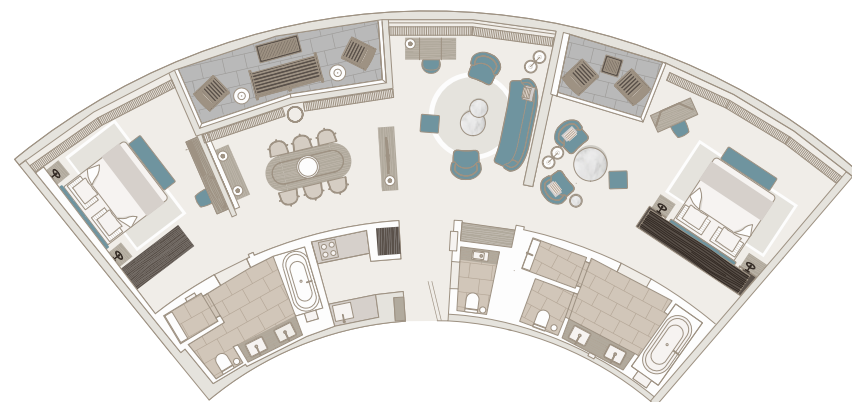
Two balconies increases the sense of space. The natural stone bathrooms are fitted with a bathtub and a rain shower, two washbasins and a separate WC.

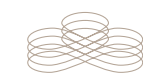
SIZE: 120M² / 1292 FT²

LOCATION: PARKVIEWS, LAKE VIEWS IN WINTER – 2ND/3RD FLOOR

FEATURES: TWO PRIVATE BALCONIES (5M² AND A 10M²)

FLOOR PLAN:





PREMIER SUITE

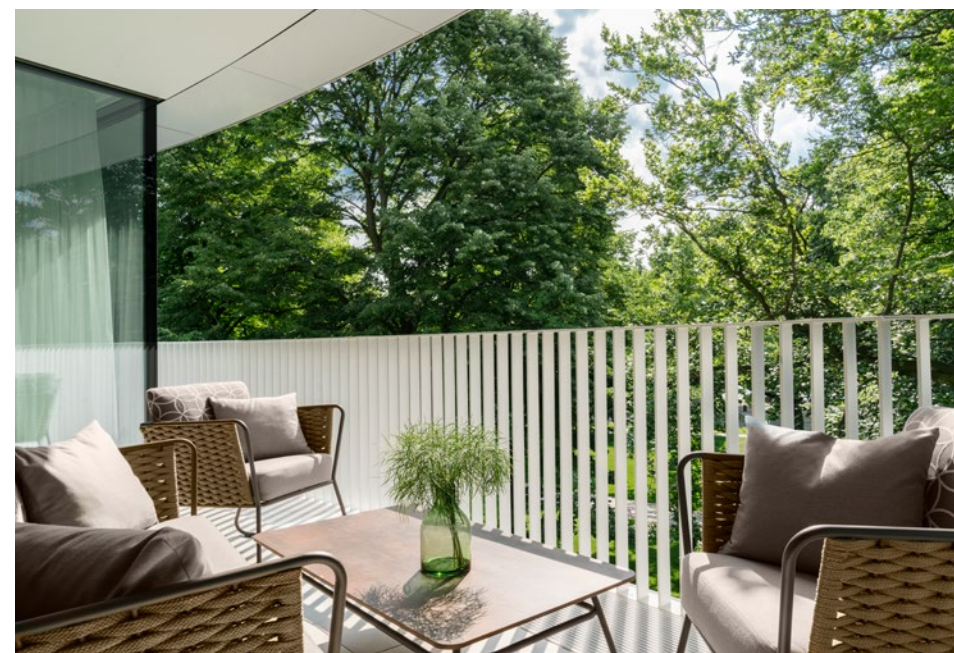
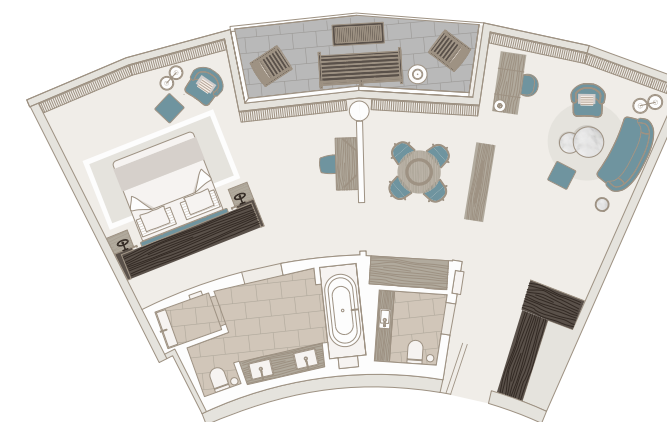
All four 65m² Premier Suites feature a separate bedroom and living room. They offer fine parquet flooring, a dining table for four, a walk-in wardrobe with full-length mirror, a desk, an extra-long bed and a guest WC. The 10m² private balcony increases the sense of space with views over the beautiful park. The natural stone bathrooms feature a bathtub and a rain shower, two washbasins and a separate WC. One of the suites can be connected with our 28m² connecting Fontenay Classic room or our 43m² Fontenay Deluxe Room.

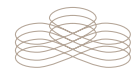
SIZE: 65M² / 807 FT²

LOCATION: VIEWS OF THE PARK - 1ST-3RD FLOOR / LAKE VIEWS IN WINTER

FEATURES: 10M² FURNISHED PRIVATE BALCONY

FLOOR PLAN:





EUROPA 2 SUITE

The design of this unique 65m² suite – the only one in this style on dry land – is inspired by the Hapag-Lloyd luxury cruise-ship MS Europa 2. Bright, earthy colors and warm wood veneer, combined with designer furniture create a distinctly nautical feel. The Europa Suite is situated on the 2nd floor and offers a separate living room and bedroom, a dining table for four, a walk-in wardrobe with full-length mirror, a desk and a guest WC. The natural stone bathroom features a bathtub and a rain shower, two washbasins and a separate WC. Our 28m² connecting Fontenay Classic room can be added on request.

SIZE: 65M² / 753 FT²

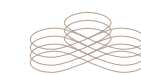
LOCATION: GARDEN VIEW – 2ND FLOOR

FEATURES: 5M² FURNISHED PRIVATE BALCONY

FLOOR PLAN:







EXECUTIVE SUITE

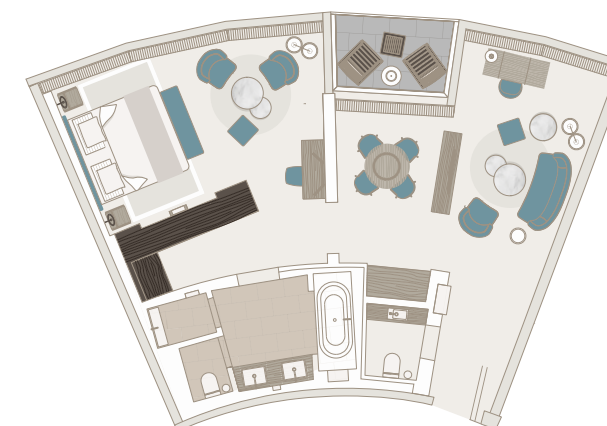
The four 65m² Executive Suites all feature a separate bedroom and living room and are fitted with fine parquet flooring, a dining table for four, a walk-in wardrobe with full-length mirror, desk, an extra-long bed and guest WC. The natural stone bathrooms are fitted with a bathtub and a shower, two washbasins and a separate WC. Our 28m² connecting Fontenay Classic room can be added on request.

SIZE: 65M² / 753 FT²

LOCATION: VIEWS OF THE NEIGHBORHOOD AND GARDEN -
1ST/3RD/4TH + 5TH FLOOR

FEATURES: 5M² FURNISHED PRIVATE BALCONY

FLOOR PLAN:





THE FONTENAY
HAMBURG



A MEMBER OF
THE LEADING HOTELS
OF THE WORLD

The Fontenay | Fontenay 10 | D-20354 Hamburg
Tel: +49 (0)40 605 6 605-0 | Fax: +49 (0)40 605 6 605-888 | info@thefontenay.com
www.thefontenay.com